

PETROLEUM COMPANY OF TRINIDAD AND TOBAGO LIMITED

PORT OF POINTE-A-PIERRE

**INFORMATION
BOOKLET**

REV. 02



EFFECTIVE DATE 01 DECEMBER 2009

NEXT REVIEW DATE 2012 JUNE 01

Port Information Booklet

REVISION AND AUTHORIZATION FOR ISSUE

Approved By	Signature & Date	Authorized By	Signature & Date
Manager Port & Marine		Port Operations Superintendent	

TABLE OF CONTENTS

	PAGE NO.
1 Disclaimer	5
2 Service Fees	5
3 Description	5
4 Port Limits	5
5 Vessel compliance with applicable laws	5
6 Documents required for port entry	6
7 Quarantine and Pratique	6
8 Pilotage	7
9 Restrictions	7
10 Anchorage	7
11 Prohibited Anchorage	7
12 ETA	7
13 VHF	7
14 Tugs	8
15 Launches	8
16 Bunker Barge	8
17 Oil Pollution	8
18 Product Availability/Loading Rates	9
19 Navigational Aids	12
20 Basic Berthing Principle	12
21 Mooring Arrangement	13
22 Master's Responsibilities	13
23 Water Density	13
24 Fresh Water	13
25 Bunker Fuel	13
26 Medical	13
27 Ballast	13
28 Repairs	14
29 Dry Docking	15
30 Surveyors	15
31 Special Precautions	15
32 Fire Fighting Equipment	15
33 Emergency Towing Wires	15
34 Smoking	15
35 Gangway	15
36 Vessel Readiness	15
37 Ship/Shore Safety	16
38 Customs Allowances	16
39 Repatriation	16
40 Airport	16
41 Local Time	16
42 Basic Minimum Requirements For Access	16
43 Shore Leave	17
44 Garbage Disposal	17
45 Funnel Smoke	17
46 Waste Oil Disposal	17

47	Currency	17
48	General	
	48.1 Tidal Variation	17
	48.2 Prevailing Winds	17
	48.3 Squalls	18
	48.4 Hurricane Season	18
	48.5 Seasons	18
	48.6 Visibility	18
	48.7 Temperature and Humidity	18
	48.8 Flags Required	18
	48.9 Laundry/Provisions	18
49	Petrotrin Onshore Contact Information	18
50	Basic Criteria for Approval of Vessels	18
51	Security	20
	51.1 Identification	20
	51.2 Notification	21
	51.3 Prohibited Items	21
	51.4 Requirements – Visiting Vessels	22
	51.5 Port Information – Safety and Security Details	22
	51.6 PFSO Details	22
	51.7 Emergency Contact Numbers	23
	APPENDICES	
	I. Sketch of Approach Channels	24
	II. Sketch of No. 1 Berth	25
	III. Sketch of No. 2 Berth	26
	IV. Sketch of No. 5 Berth	27
	V. Sketch of No. 6 Berth	28
	VI. Sketch of No. 7 Berth	29
	VII. Sketch of No. 8 North	30
	VIII. Port of Pointe a Pierre Authorities	31

PORT INFORMATION AND REQUIREMENTS

POINTE-A-PIERRE (PETROTRIN's Oil Terminal)

1. DISCLAIMER

The information contained in this document is only meant to guide the user and does not claim to be complete or final. As a result, The Petroleum Company of Trinidad and Tobago Limited (PETROTRIN) does not hold itself liable for any claims or other issues as a result of information contained herein or not included or considered.

2. SERVICE FEES

PETROTRIN retains the right to charge a fee for such services it may provide as are contained in the booklet and which do not bear any direct relation to the loading and/or offloading of cargo. PETROTRIN's Port Operations Superintendent or the ship's Agent should therefore be contacted before requisitioning such services so as to ascertain the relevant charges, if any.

3. DESCRIPTION

PETROTRIN Pointe-a-Pierre Port is an I.S.P.S. COMPLIANT, ISO 9001 CERTIFIED, state owned and operated oil terminal which services the nearby PETROTRIN refinery. The terminal consists of seven berths along two finger piers, and two sea-island berths. It handles 100,000 bbls of crude oil and 140,000 bbls of refined products per day.

4. PORT LIMITS

Such part of the Gulf of Paria bounded by an imaginary line as follows: to the South by latitude 10 18'.5 North from the mainland due West to longitude 61 35'.2 West, thence due North to latitude 10 21'.5 North, thence due East to longitude 61 30'.7 West thence due South to latitude 10 20'.5 North, thence due East to the mainland. The designated area for tendering Notice of Readiness shall be the Anchorage as outlined in the port plan attached.

5. VESSEL COMPLIANCE WITH APPLICABLE LAWS

The vessel must be in full compliance with the applicable laws, regulations, rules, ordinances, decrees, international conventions and any other applicable directives of the country of vessel's registry and of Trinidad and Tobago. Including but not limited to, those related to customs and vessel's navigation, size, manning, operation, safety, design, construction, maintenance, and pollution prevention. Vessels to adhere to all applicable IMO conventions and classification society's rules, with all applicable amendments collectively referred to as "applicable laws and regulations". The vessel must have on board class, safety and construction certificates, certificates of financial responsibility, Ship Oil Pollution Emergency Plan (SOPEP) manual and other documentation required by applicable laws and regulations. Any and all expenses due to non-compliance will not be for PETROTRIN's account.

NOTE: The laws, regulations, rules and restrictions applicable to *inter alia*, customs, health, environment, are encompassed in the Laws of Trinidad and Tobago and in particular the:

- √ Customs Act Chapter 78:02
- √ Immigration Act Chapter 18:01
- √ Quarantine Act Chapter 28:05
- √ Port Authority Act Chapter 51:01
- √ (Harbour Master) Shipping Act 1987
- √ Fire Arms Chapter 16:01
- √ Oil Pollution of Territorial Waters Act Chapter 37:03
- √ Pilotage Act Chapter 51;02
- √ Occupational Safety and Health Act 2004

6. DOCUMENTS REQUIRED FOR PORT ENTRY

- 8 copies Crew List
- 2 copies Stores List
- 2 copies Unmanifested Cargo List
- 2 copies Crew Declaration
- 1 copy Declaration of Health
- 4 copies Arrival Report
- 2 copies Firearms & Ammunition
- Deratting Certificate

Government officials including Customs and Immigration Officers will board vessels at anchorage to complete checks and issue clearance. Officials require the accommodation ladder to be rigged, usually on port side, for boarding and clearance.

7. QUARANTINE AND PRATIQUE

Quarantine signals must be displayed by all vessels approaching Pointe-a-Pierre from international waters. These signals shall be displayed continuously until pratique is granted. These signals are:

- Sunrise to Sunset Quarantine flag “Q”
- Sunset to Sunrise Signal light (Red over White)

The following documents are required for immediate inspection by the boarding officials:

- Maritime International Declaration of Health.
- Valid Deratization or Deratization exemption certificate.
- Crew List.
- Passenger List if passengers are carried.
- Certificate of Inoculation (vaccination list) against communicable diseases.
- Valid passports and/or Seaman’s certificates for all crew members and passengers.
- Harbour report/last port clearance, diversion instructions if applicable.
- Loadline, Tonnage, Ship’s Registry, Safety Radio, Safety Construction, Safety Equipment and I.O.P.P. certificate.
- ISPS CERTIFICATE of compliance.

8. PILOTAGE

Pilotage is compulsory. Pilot boards arriving vessels in approx. position: Lat: 10 degrees 19 mins. North: Long: 61 degrees 30 mins. West or at designated anchorage. Boarding is via the pilot launch. The pilot order is placed by the port on behalf of the vessel's agent after receipt of vessel's ETA and completion of daily vessel turnaround schedule. Pilot ladder conforming to International Safety Standards recommended by IMO to be supplied by vessel.

9. RESTRICTIONS

There are no day or night entry restrictions. However, Free Pratique must be obtained and Crew Lists, Stores Lists, etc. must be presented to local agents on arrival. Arriving vessels must contact "Pointe-a-Pierre Shipping" on VHF Channel 16 two hours prior to arrival to pass ETA at the anchorage and to receive berthing instructions.

10. ANCHORAGE

The Pointe-a-Pierre general anchorage area is West of the pipeline jetties (see Appendix I). There exists safe anchorage and good holding ground in the roadstead. On account of Pierre Shoal, a 21 feet patch about 7 cables S.W. of the head of the main viaduct, vessels of moderate draft should approach with the main viaduct jetty head [light - Fl (4) 10s] bearing more than 105° T. The main viaduct consists of pipelines supported by reinforced concrete piles, and extends in a W.S.W. direction 6,190 ft. from the shore to the jetty head latitude: (10° 19' North 61° 28' West).

11. PROHIBITED ANCHORAGE

- Within a quarter mile on either side of submarine pipelines which run from position 10°20'.6N, 61°31'.5W to location 10°19'.9N, 61°29'.2W.
Within a quarter mile extending South of the structure in location 10°19'.9N, 61°29'.2W and No. 5 Berth.
- Within a quarter mile on either side of the pipelines from No.5 Berth to a position on the pipeline viaduct 10°19'.2N, 61°28'.2W.

12. ETA:

Vessels to send ETA messages via vessel's agent 72, 48 and 24 hours prior to arrival to 'Attention: Port Operations Superintendent, Port and Marine, Petrotrin, Pointe-a-Pierre'. Email-PortOperations@petrotrin.com. Non receipt of proper ETA could jeopardize the terminal's operational flexibility resulting in delays and unnecessary inconveniences to parties involved. Costs arising out of non-compliance will not be for PETROTRIN's account.

13. VHF RADIO

PETROTRIN's Port and Marine Department maintains a 24 hours VHF radio watch on Channel 16. Call "Pointe-a-Pierre Shipping" on Channel 16 to contact the Port Operations Coordinator. The port works on Channel 13 for general radio communications and on channel 11 for berthing and unberthing operations.

14. TUGS

Petrotrin owns three (3) tugs of which 2 are manned during normal operations.

Tug Name	Horse Power
Petrotrin Carib Valley	4750
Petrotrin Plaisance	4200
Petrotrin Concord	2250

The following are the minimum tug requirements at Pointe-a-Pierre:

Nos. 5, 6 & 8 North Berths For mooring and unmooring vessels: one (1) tug in attendance for vessels below 10,000 mt DWT and two (2) tugs in attendance above 10,000 mt DWT.

Nos. 1, 2 North, 3 & 7 Berths For mooring and unmooring vessels; One (1) tug in attendance for vessels between 7,000– 10,000mt DWT and two (2) tugs in attendance for vessels above 10,000 mt DWT.

Tugs must be made fast to vessels before entering the approach channels to the berths. All cargo tank tops, ullage ports and vents shall be closed and/or tightly battened down during mooring and unmooring operations.

15. LAUNCHES

Petrotrin maintains three (3) launches in service which are used for mooring and transport of personnel/crew and materials.

16. BUNKER BARGE

Petrotrin owns/operates one (1) bunker barge (Petrotrin Marabella) which delivers IFO and gas oil bunkers within the Gulf of Paria.

Bunker barge capacity – IFO 20,000 barrels; Gas Oil – 10,650 barrels

Note – bunker barge is not self propelled.

17. OIL POLLUTION

The provisions of the Oil Pollution of Territorial Waters Act shall prevail.

18. PRODUCT AVAILABILITY/LOADING RATES

#1 BERTH & #2 NORTH BERTH

PRODUCT	LOADING RATES/ BBLs per hour		NUMBER OF MANIFOLDS AND SIZES
	MIN.	MAX.	
Fuel Oil	1000	7000	1 x 6'' ; 1 x 12''
Gas Oil	1000	8000	3 x 8''
Jet Fuel	1000	6000	2 x 8''
Motor Gasoline	1000	7000	3 x 8''
L.P.G	-	500	1 x 3''
AVGAS	500	2,000	1 x 8''

N.B. 4'' diameter hoses are available for small cargo parcels < 5000 bbls

#2 SOUTH BERTH

PRODUCT	LOADING RATES/ BBLs per hour		NUMBER OF MANIFOLDS AND SIZES
	MIN.	MAX.	
Fuel Oil	1000	4000	1 x 6''
Gas Oil	1000	3000	1 x 4''
Jet Fuel	1000	3000	1 x 4''
Motor Gasoline	1000	3000	1 x 4''
L.P.G	-	500	1 x 3''
AVGAS	500	2,000	1 x 4''

#3 NORTH BERTH

PRODUCT	LOADING RATES/ BBLs per hour		NUMBER OF MANIFOLDS AND SIZES
	MIN.	MAX.	
Ethanol	2500	5000	2 x 8''

#5 BERTH

PRODUCT	LOADING RATES/ BBLs per hour		NUMBER OF MANIFOLDS AND SIZES
	MIN.	MAX.	
Fuel Oil	3000	18000	1 x 6"; 3 x 12"
Vacuum Gas Oil	3000	18000	1 x 6"; 3 x 12"

* When necessary arrangements may be made for Crude receipt at this facility.

#6 BERTH

PRODUCT	LOADING RATES/ BBLs per hour		NUMBER OF MANIFOLDS AND SIZES
	MIN.	MAX.	
Fuel Oil	3000	18000	2 x 12"
VGO	3000	18000	

PRODUCT	DISCHARGING RATES/ BBLs per hour		NUMBER OF MANIFOLDS AND SIZES
	MIN.	MAX.	
Crude Oil	-	24000	2 x 12"

#7 BERTH

PRODUCT	LOADING RATES/ BBLs per hour		NUMBER OF MANIFOLDS AND SIZES
	MIN.	MAX.	
Fuel Oil	1000	7000	1 x 8"
Gas Oil	1000	7000	1 x 8"; 1 x 4"
Jet Fuel	1000	5000	1 x 8"
Motor Gasoline	1000	4000	2 x 8"; 1 x 4"

#8 SOUTH BERTH

PRODUCT	LOADING RATES/ BBLs per hour		NUMBER OF MANIFOLDS AND SIZES
	MIN.	MAX.	
Fuel Oil	1000	3000	1 x 6"
Gas Oil	1000	3000	1 x 4"

#8 NORTH (SULPHUR) BERTH

Loads Sulphur Prills via conveyor belts and chute at a maximum rate of one hundred and fifty metric tonnes per hour (150MT/h).

Maximum allowable pressure on all product loading (LPG excluded) and crude discharge systems is 100 PSI.

Maximum allowable pressure for LPG loading systems is 300 PSI.

Hydrogen Sulphide (H₂S): the maximum allowable hydrogen sulphide content in any crude cargo or other cargoes for discharge at Pointe-a-Pierre is 5 ppm by volume.

19. POINTE-A-PIERRE HARBOUR NAVIGATIONAL LIGHTS

<u>NAVIGATIONAL AIDS</u>	<u>LOCATIONS</u>	<u>GEOGRAPHICAL COORDINATES DEG.MIN.SEC.</u>	<u>LIGHT CHARACTER</u>	<u>COLOUR/SHAPE</u>
No. 1 Buoy	#6Berth CHANNEL Ent.	10 20 14.00 N 61 29 35.11 W	FLASH GREEN 1 Sec.	GREEN CONICAL
No. 2 Buoy	#6Berth CHANNEL Ent.	10 20 06.00 N 61 29 37.07 W	FLASH RED 1 Sec.	RED CONICAL
No. 3 Buoy		REMOVED		
No. 4 Buoy		REMOVED		
No. 5 Buoy	#5Berth CHANNEL	10 19 50.65 N 61 28 37.17 W	FLASH GREEN 1 Sec.	GREEN CONICAL
No. 6 Buoy	#5Berth CHANNEL	10 19 45.48 N 61 28 44.15 W	FLASH RED 1 Sec.	RED CONICAL
No. 7 Buoy	#7Berth CHANNEL	10 19 42.25 N 61 28 19.75 W	FLASH GREEN 1 Sec.	GREEN CONICAL
No. 8 Buoy	NORTH CARDINAL BUOY	10 19 17.81 N 61 29 24.72 W	FLASH WHITE 1 Sec.	BLACK & YELLOW NORTH CARDINAL
No. 9 Buoy	#2Berth South CHANNEL Ent.	10 18 54.03 N 61 29 01.41 W	FLASH GREEN 1 Sec.	GREEN CONICAL
No. 10 Buoy	#2Berth South CHANNEL Ent.	10 18 49.77 N 61 29 00.00 W	FLASH RED 1 Sec.	RED CONICAL
Main Viaduct Jetty Head (Beacon)	#1Berth BEACON	10 18 59.84 N 61 28 47.90 W	FLASH 4 WHITE 10 Secs.	SILVER METAL GANTRY STRUCTURE
La Carriere	LA CARRIERE	10 19 32.79 N 61 27 34.08 W	FLASH WHITE 2.5 Secs. 17.0 M	DERRICK
No. 2 South Berth (Turning Basin)	#2Berth South TURNING BASIN	10 18 55.45 N 61 28 34.95 W	FL RED 1 Sec.	SPAR
No. 1 Berth Forward Breast Line Dolphin	#2Berth South CHANNEL	10 18 57.02 N 61 28 46.83 W	FL GREEN 1 Sec.	WOODEN DOLPHIN

20. BASIC BERTHING PRINCIPLE FOR WHICH BERTH FENDERING SYSTEM IS DESIGNED

A ship about to berth should be brought, assisted by tugs and the use of her engines/anchor, to a position in front of her berth and stopped dead a short distance off and parallel to her berth. The layout of her mooring lines to the berth mooring points will then commence. The ship should then be pushed or warped slowly to the berth, ideally making a small angle (less than 10 degrees) with the berth. The ship will then be brought to rest onto the fenders. Nothing in this berthing principle shall exonerate the master from taking any precautions required by the ordinary practice of seamen, or by any relevant special circumstances of the case. At all times the ship should proceed at a safe speed so that she can take effective action to avoid collision and be stopped within a distance appropriate to the prevailing circumstances and conditions.

21. MOORING ARRANGEMENT

For vessels 7,000 mt dwt. and above 14 lines arranged 3 : 2 : 2 fore and aft must be used. Mooring wires, if used, are to be fitted with 10 metre long rope pennants. At No. 1 Berth, stern lines and forward and aft breast lines must be ropes. For vessels below 7,000mt dwt, 8 lines arranged 2:2 fore and aft may be used. However the Dock Supervisor will determine when additional lines are necessary. While the vessel is alongside all mooring lines must be kept taut. The vessel's personnel are responsible for adjusting the mooring lines as necessary in order to prevent damage to the vessel, berth, gangway, hoses or cargo boom connections. In case of emergency, such as the sudden parting of a mooring line, the cargo transfer must be immediately stopped and contact made to the terminal for tug assistance. While the tug is alongside, vessel's tank lids and ullage ports must be closed.

22. MASTER'S RESPONSIBILITY

The Master is responsible at all times for the safety of all the ship's operations.

23. WATER DENSITY

1.025, (August to November approximately 1.023).

24. FRESH WATER

A limited supply of fresh water is available at berth Nos. 1, 2North, 2 South, 7, 8 South and 8 North.

25. BUNKER FUEL

Bunker "C" fuel oil is supplied ex-pipeline. IFO is supplied by barge only. Gas oil is supplied at berths Nos 1, 2 North, 2 South, 7 and 8 South and ex barge.

Bunker barge and tugs are not permitted alongside a tanker while it is loading or discharging volatile hydrocarbons or is loading into tanks that previously contained volatile hydrocarbons.

26. MEDICAL

PETROTRIN's hospital facilities are available for emergencies. The ship's agent should be contacted to arrange non-emergency medical services.

27. BALLAST

Vessels must arrive with clean ballast. No dirty ballast facilities are available and the discharge of oil or oily water mixtures into the harbour is strictly prohibited. All vessels are required to have a minimum of 25 percent of the Summer Deadweight of ballast and/or cargo evenly distributed on board so as to ensure effective use of propulsion and bow thrusters for safe maneuverability during mooring and unmooring operations.

28. REPAIRS

Main engines or any repairs that immobilize the main engines are not permitted alongside the terminal facilities except by expressed written approval of the Port Operations Superintendent. Vessels at anchorage that have tendered notice of readiness shall keep their main engines in operational readiness and sufficient crew on board for mooring operations at a moments notice. Under no circumstances shall 'hot work' be permitted on vessels alongside berths or on tankers at anchorage handling cargo. Hot work shall include the use of power or hand tools that can produce frictional sparks.

Before consideration is given for hot work or other repairs while at the anchorage, vessel must provide scope of works to be undertaken together with a Job Hazard Analysis (JHA).

JHA to include:

1. Basic job steps;
2. Hazards identified;
3. Control measures;
4. Recovery measures (emergency response);
5. Officer in charge of control and recovery measures.

Underwater activities are subject to

1. The prior approval and scrutiny of the Port Security Department.
2. All government agency approvals being granted
3. Underwater works to be carried out by qualified/certified divers using standard industry safety precautions. (See International Marine Contractors Association (IMCA) rules).

For all repairs the master or person in charge of the vessel has to take all normal safety precautions.

The master, crew, agents, servants and/or owners of the vessel, either by act or omission, shall not do anything or permit anything to be done in the port of Pointe-a-Pierre that has, or is likely to have, any of the following results:

- (a) jeopardy of the safety or health of persons in the port;
- (b) interference to navigation;
- (c) obstruction of or threat to any part of the port;
- (d) interference of an authorized activity in the port;
- (e) cause of nuisance;
- (f) cause of damage to ships or other property;
- (g) adverse effect on soil, air or water quality;
- (h) adverse effect on port operations or the property managed, held or occupied by Petrotrin.

In consideration by Petrotrin to grant permission for any repair activity, the vessel's master, crew, agents, servants and owners shall agree to indemnify and hold harmless Petrotrin and/or its servants in respect of any claims, losses or damages arising.

29. DRY DOCK

Dry dock facilities/Ship yards are available on the Island. Contact Agent.

30. SURVEYORS

Representatives of classified societies are available. Contact Agent.

31. SPECIAL PRECAUTIONS

The Emergency Alarm is one prolonged blast of ship's whistle. On sounding of the alarm all cargo operations shall cease.

32. FIRE FIGHTING EQUIPMENT

The ship's fire fighting equipment including the international ship/shore connection must be in fire fighting readiness at all times, Terminal is equipped with monitors and hose connections, system is capable of pumping 2400 gallons of water per minute.

33. EMERGENCY TOWING WIRES

Vessels alongside are required to have emergency towing wires positioned both on the offshore bow and quarter of the ship. The eyes of these wires should be regularly checked and adjusted to keep the eye above the water line during the operations.

34. SMOKING

Smoking is strictly prohibited within industrial areas of Petrotrin. The port is a designated industrial area.

Smoking on board ships is permitted only in those enclosed spaces that are specifically designated, agreed to and stated on the Ship Shore Safety Check List (SSSCL). (SSSCL is completed during the pre loading/discharging conference).

35. GANGWAY

A suitable gangway will normally be provided by the terminal (except at No. 5, 8 South and 8 North Berths). When the shore gangway is out of service the vessel's gangway shall be used. The ship shall provide a life ring with 15 fathoms of rope conveniently placed in the vicinity of the gangway.

36. VESSEL READINESS

An efficient watch shall be maintained on deck and in the engine room of all ships in port and competent personnel must be on board at all times for vessel operations or emergency situations. While alongside, the vessel shall maintain propulsion machinery in readiness at all times to leave the berth under full power, at short notice. Upon completion of cargo operations and disconnection of hoses or booms arrangements are made for the vessel to unberth safely.

37. SHIP/SHORE SAFETY

The responsibility and accountability for the safe conduct of operations while a ship is at the terminal are shared jointly between the ship's master and the terminal representative. Before cargo or ballast operations commence, the master, or his designate, and the terminal representative should:

- agree in writing on the transfer procedures, including the maximum loading and discharge rates.
- agree in writing on the action to be taken in the event of an emergency during cargo or ballast handling operations.
- discuss, complete and sign the Ship Shore Safety Check List (SSSCL).

38. CUSTOMS ALLOWANCES

200 cigarettes or 50 cigars or 0.5. lb tobacco and 2x26 ozs. bottles of spirits.

39. REPATRIATION

Facilities exist for effecting crew changes and arranging repatriation. Arrangements are to be made with the ship's agent.

40. AIRPORT

The Piarco International Airport is approximately 28 miles north east of Pointe-a-Pierre, and is served by international airlines with regular flights.

41. LOCAL TIME

The local time is GMT minus 4 hours. No daylight saving time applies.

42. BASIC MINIMUM REQUIREMENTS FOR ACCESS THROUGH THE PORT OF POINTE-A-PIERRE

The inherent risk associated with this marine oil terminal and consideration for the safety of all personnel requires ship's personnel transiting terminal area to be appropriately dressed. The following is the minimum code of dress for ship's personnel transiting Petrotrin's terminal facility for shore leave:

Ship's personnel are required to transit the port area via the approved route and designated transport. Transit through certain hazardous industrial areas such as berths and tank farms will require explicit approval from port and area officials having regard for the appropriate PPE.

Footwear:

- a. Proper fitting shoes or boots in good repair with flat heels;
- b. Shoelaces shall be properly tied;
- c. Sandals, slippers, shoes with open heels and open toes etc. are not permitted.

Clothing:

- a. Should cover full torso including shoulders and legs;
(Short pants/skirts, sleeveless vests, see-through outfits etc. are not permitted.)

Additionally:

- I. Sharp or pointed objects, firearms, explosive substances, matches or cigarette lighters, flammable liquids shall not be carried.
- II. Personnel who appear to be under the influence of any intoxicating substance and/or illegal drug will not be permitted to transit the marine terminal facility.
- III. Smoking is prohibited.
- IV. Cellular phones and other non-intrinsically safe devices must be switched off.
- V. No photographs shall be taken without the permission of the management of the port.
- VI. Personnel must have a photo ID issued by a recognized authority.
- VII. Minors under the age of 16 years must be accompanied by an adult.

43. SHORE LEAVE

Regular launch service from vessels at Pointe-a-Pierre only, for all crew members. Crew Launch service available to and from vessel. Note - agent must arrange taxi service as ship's personnel are not allowed to walk through the compound. Shore pass from Terminal/Customs is required.

44. GARBAGE DISPOSAL

The ship's agent must be contacted to arrange for garbage disposal. Agent must also arrange Customs approval for disposal. It is prohibited to dispose of garbage or waste material into the sea or on the piers.

45. FUNNEL SMOKE

Blowing of boiler tubes is not permitted in port.

46. CARGO RELATED SLOPS DISPOSAL

There are shore reception facilities (subject to tank ullage) which can accommodate a maximum of 2,000 barrels of hydrocarbon tank washings per vessel. Material must be pumpable at ambient temperature. Arrangements must be made in advance between charterer and Petrotrin's Marketing Department. Slops to be sampled prior to discharge. Only hydrocarbon tank washings from vessel are considered for slops receipt.

47. CURRENCY

The local currency is the Trinidad and Tobago Dollar (TT\$) U.S. \$1.00 = TT\$ 6.30 (approx. floating rate).

48. GENERAL

48.1 Tidal Variation: Rise and fall is approximately 0.9 to 1.2 meters. Flood southerly and ebb northerly at half to one knot. Between June and November the rates can be in excess of the normal rate.

48.2 Prevailing Winds: N.E. trade winds. North easterly or east northeasterly winds predominate from January to March and the winds are at their strongest averaging between 12 and 15 knots.

- 48.3 Squalls:** Squalls of varying intensity are common during the seasonal torrential rains from June to November. These rain squalls are accompanied by sudden shifts in wind direction. Masters of vessels are therefore advised to keep a look out for these unexpected changes in weather conditions and keep a close watch on moorings while alongside berths.
- 48.4 Hurricane Season:** The main hurricane season is from the beginning of August to mid-September, but hurricanes may occur as early as June and as late as November. These storms seldom come south of latitude 12° North although Trinidad may experience heavy swells and sometimes rough seas when a hurricane is crossing to the north of the island.
- 48.5 Seasons:** There are basically two seasons, a dry season from January to June and a wet season from July to December.
- 48.6 Visibility:** Fog is virtually non-existent in this area. Visibility is normally good except during heavy rains.
- 48.7 Temperature and humidity:** The average temperature is between 27 and 30 degrees Celsius. The daily range is from 21 to 33 degrees. The humidity is approximately 75%.
- 48.8 Flags Required:** Republic of Trinidad and Tobago and International Code Flags “B”, “G”, “H” and “Q”.
- 48.9 Laundry/Provisions:** Contact ship’s agent.

49. PETROTRIN ONSHORE CONTACT INFORMATION

The Petroleum Company of Trinidad and Tobago Limited, Pointe a Pierre, Trinidad, W.I. Tel: (868) 658-4200. Petrotrin Port & Marine: Fax: (868) 658-4636. Contact: Port Operations Superintendent (868) 658-0327 or (868) 658-4200 Ext. 2426/7; email Colin.Piper@petrotrin.com Manager, Planning and Economics (868) 658-7413 or (868) 658-4200 Ext. 2153; Manager, Port & Marine (868) 658-3347 or 658-4200 Ext. 2424/2327; email: Leonard.ChanChow@petrotrin.com

50. BASIC CRITERIA FOR APPROVAL OF VESSELS AT POINTE A PIERRE TANKER TERMINAL

Vessel to comply with the following berth restrictions

BERTH	MAX. DRAFT	MAX. DWT	MAX. LOA	MIN LOA	MAX. MWL
1	11.8m	50,000	220m		13.0m
2N	11.8m	63,000	236m		13.0m
2S	7.0m	7,000	107m		
3N	10.3m	45,000	182m	115.3m	
5	12.6m	100,000	274m		15.0m
6	15.8m	120,000	290m	122m	16.7m
7	10.3m	35,000	213m		
8S	6.6m	5,500	79m		
Sulphur	7.0m	25,000	174m		

DWT- Dead Weight Tonnage *LOA* – Length overall *MWL* – Manifold to Water Line

- a. Vessel to submit completed Questionnaire '88 Version 3 (Industry Standard) to Marketing Department for review and acceptance. Vessels must be deemed fit for purpose and meet minimum standards of safe operations based on the guidelines of OCIMF Ship Inspection Report (SIRE). Irrespective of the vetting result, the terminal retains the right to reject nominated vessels if on arrival an actual inspection provides justifiable grounds to do so.
Note: Any delays at Pointe a Pierre tanker terminal arising out of incomplete or incorrect information from vessel shall not be for PETROTRIN's account.
- b. Vessel must be able to provide proof of registration.
- c. Vessel must have a valid International Tonnage Certificate.
- d. Vessel must provide evidence of meeting applicable Safety Standards by having the following valid certificates:
- LOAD LINE
 - SOLAS SAFETY EQUIPMENT.
 - SOLAS SAFETY CONSTRUCTION
 - SOLAS SAFETY RADIO
 - IOPPC (INTERNATIONAL OIL POLLUTION PREVENTION)
 - SMC SAFETY MANAGEMENT
 - ISSC (INTERNATIONAL SHIP SECURITY)
 - CLASS
- e. a) Vessel's manifold to comply with the latest edition of OCIMF 'Recommendations for Oil Tanker Manifolds and Associated Equipment'.
b) Vessel's manifold to be fitted approximately mid ship.
- f. Vessel to have clean ballast. (THERE IS NO DIRTY BALLAST FACILITY AVAILABLE)
- g. Vessel must provide evidence of third party liability insurance upon request.

NOTE: OIL POLLUTION INSURANCE FOR INTERNATIONAL CARGOES. OWNER TO HAVE IN PLACE AND SHALL MAINTAIN COVER FOR OIL POLLUTION OF UP TO THE MAXIMUM AVAILABLE THROUGH THE INTERNATIONAL GROUP OF P&I CLUBS AND EXCESS OIL POLLUTION COVER AVAILABLE THROUGH EITHER OWNERS P&I CLUB AND/OR FIRST CLASS MARKET UNDERWRITERS SO THAT TOTAL MINIMUM COVERAGE IS NEVER LESS THAN 1 BILLION USD. OWNER OF THE VESSEL SHALL BE A MEMBER OF THE INTERNATIONAL TANKER OWNERS POLLUTION FEDERATION LIMITED (ITOPF) AND THAT THE VESSEL SHALL HAVE ON BOARD A VALID CERTIFICATE ISSUED PURSUANT TO THE 1966 CIVIL LIABILITY CONVENTION OR THE 1992 PROTOCOLS TO THE SAME.

51. SECURITY

PETROTRIN, Pointe a Pierre port, is I.S.P.S. Code certified, and to this end the following is required of all users/visitors to its facilities:

51.1 Identification

All persons who use the facility must be properly identified by an acceptable identification medium, as described below:

- **Company Personnel**

All Company personnel are required to have their PETROTRIN issued badges readily visible on their person, whilst on the facility.

- **Ships' Agent/Chandlers/Suppliers**

Ships' agents/Chandlers/Suppliers are required to present a badge issued by their company which should have at least:-

- A photograph
- A badge number
- An expiry date
- The Company's logo

- **Ships' Crews**

Ships' crews must produce an identification document issued by the country of origin, or a badge issued by vessel, containing at least:-

- A photo
- A badge number
- The company's logo

- **Government Employees**

All government employees entering the facility on official business may enter at any time after presenting their department's badge.

- **All Other Visitors**

All other persons are required to produce an acceptable form of national identification document (identification card/driving permit/passport).

Ships' agents/chandlers/suppliers and other visitors will be issued with a visitor's badge on entrance to the port facility. This badge must be displayed on their person at all times and must be returned on leaving. Additionally, visitors must sign the Security Pass Log Book for receiving and returning these badges.

51.2 Notification of stores delivery & movements of ship's crew

- a. A minimum of twelve (12) hours notice must be given prior to the delivery of ship stores, spares, equipment and supplies. Items for delivery to the vessel will be denied access unless prior notice is provided. Such notice shall include:-
 - A description of the items in question.
 - Name and driving permit number of the driver and number of persons accompanying him.
 - Registration number of the vehicle used in delivery together with a valid HSE Inspection Sticker issued by PETROTRIN's HSE Department.
 - All personnel above to complete Petrotrin's HSE orientation module prior to entry to the port.
- b. Prior notice and transportation are required to facilitate crew members proceeding to and from shore leave. No crew member will be allowed to transit the facility on foot. Prior notice would also have to be given with respect to the name and driving permit number of the driver tasked with transporting ships' crews to and from the port facility. All crew members and their baggage are subject to security search.
- c. Unaccompanied baggage will not be normally accepted by the facility.

51.3 Prohibited Items

- a. Alcoholic Beverages: The possession and/or consumption and/or use of alcoholic beverages by any person within the facility is prohibited. Persons who show evidence of being under the influence of alcohol or other drugs will not be admitted onto the facility.
- b. Weapons: the possession, carrying and keeping of weapons on the facility is strictly forbidden except for (i) PETROTRIN's precepted Estate Constables; and (ii) agents or representatives of the Government, acting in their capacity as such. No one else will be admitted to or be allowed to carry weapons within the port facility.
- c. Knives: knives with a fix/folding blade longer than four (4) inches will not be permitted to be carried by individuals either concealed or openly. Contractors and employees whose duties require such a knife will be permitted to use such a knife on the job, but not carry attached to the person other than at the job site.
- d. Photographs: the taking of photographs or the use photographic or film devices within the port facility is prohibited except where prior approval is received from Manager, Port and Marine.

51.4 Requirements – Visiting Vessels

- a. A completed “Ship Pre-arrival Information Form” must be provided to the Port Facility Security Officer at least twenty-four (24) hours prior to the arrival of the vessel. This information can be submitted by fax or e-mail.
- b. Ship Pre-Arrival Forms can be sourced from the vessel’s agent or the Port Facility Security Officer.
- b. Vessels visiting the facility for the first time are also required to submit a copy of their I.S.S.C.
- e. A vessel prearrival questionnaire for port operations must be obtained from agents, completed and submitted 24 hours prior to arrival.

51.5 Port Information – Safety and Security Details

PORT NAME	PETROTRIN, Pointe-A-Pierre
PORT ID NO	23003
LOCATION	Trinidad
	Latitude-10° 18.5’ N
	Longitude-61° 35.2’ W
STATEMENT NO	0270
APPROVAL DATE	25 th June 2004
STILL IN FORCE	YES

51.6 PFSO Details

Name: Selwyn Johnetty
Contact Details:
Office: 868-658-7761
PABX: 868-658-4200 EXT 2184
Mobile: 868-683-0846
Fax: 868-658-7763
E-mail: selwyn.johnetty@petrotrin.com

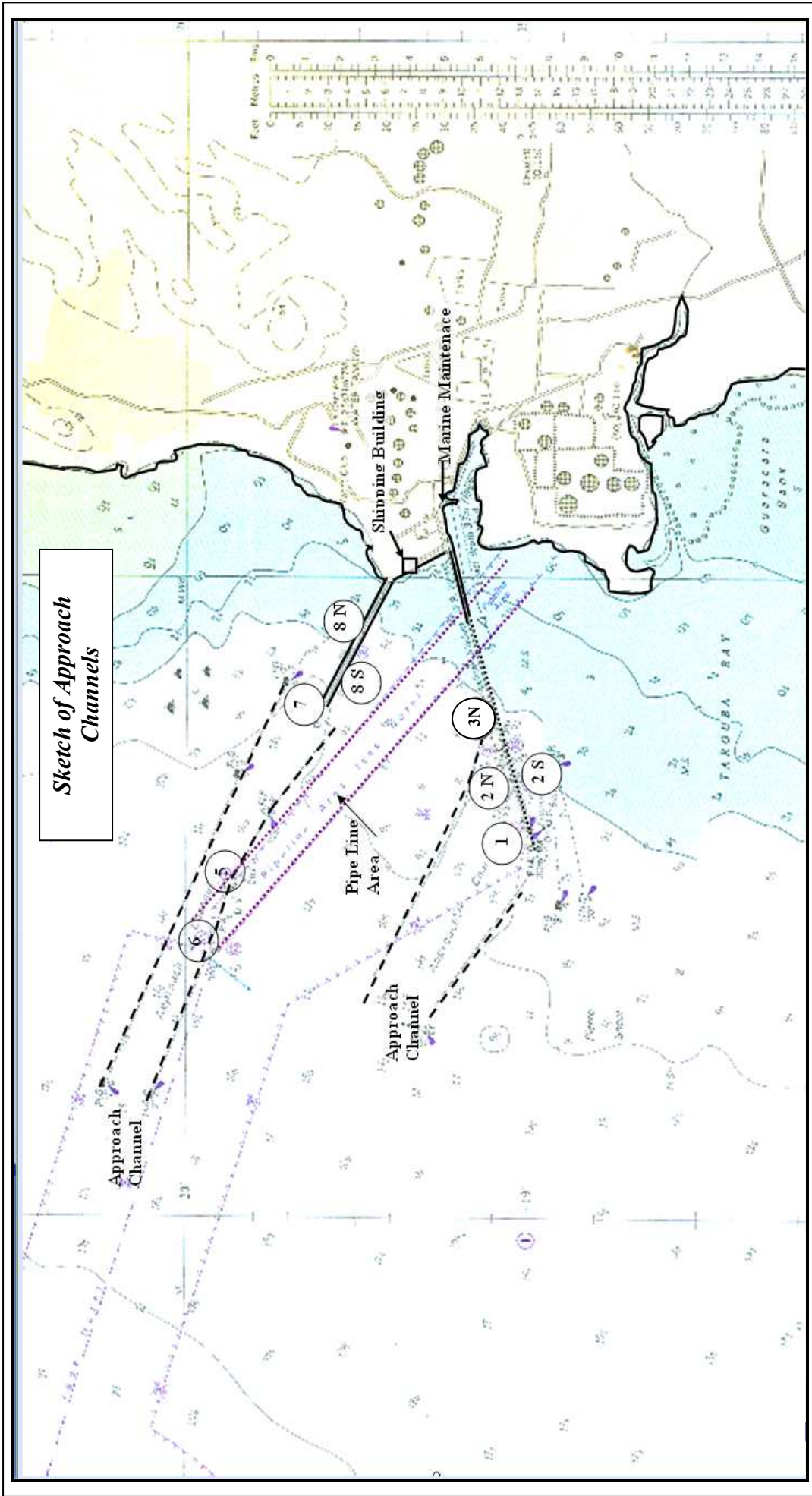
51.7 EMERGENCY CONTACT NUMBERS

ORGANIZATION	CONTACT INFORMATION
T & T Coast Guard (Headquarters)	868-800-4440 868-634-4440
T & T Coast Guard (Marine Ship Safety and Port Facility Security Unit)	868-623-0861 868-623-0002 e-mail: ttda@tstt.nett.tt
T & T Fire Service (Marabella Fire Station)	868-657-4000
PETROTRIN Security Headquarters	868-658-3150
PETROTRIN Fire Department	868-658-4200 EXT 2580
PETROTRIN Medical Department	868-658-1301

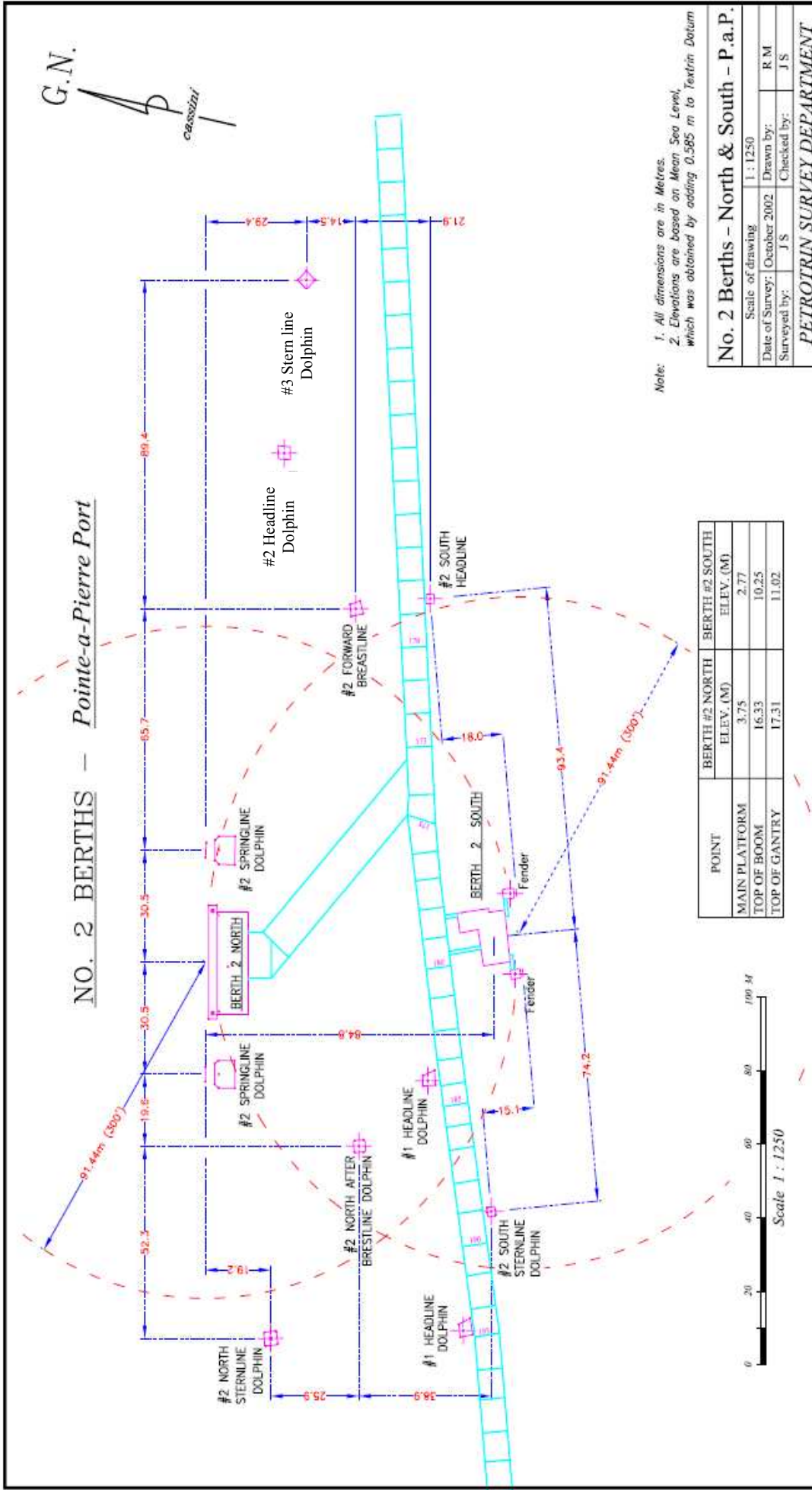
APPENDICES

- I. Sketch of Approach channels
- II. Sketch of No. 1 Berth
- III. Sketch of No. 2 Berth
- IV. Sketch of No. 5 Berth
- V. Sketch of No. 6 Berth
- VI. Sketch of No. 7 Berth
- VII. Sketch of No. 8 Berth
- VIII. Telephone and email contacts

APPENDIX I



APPENDIX III

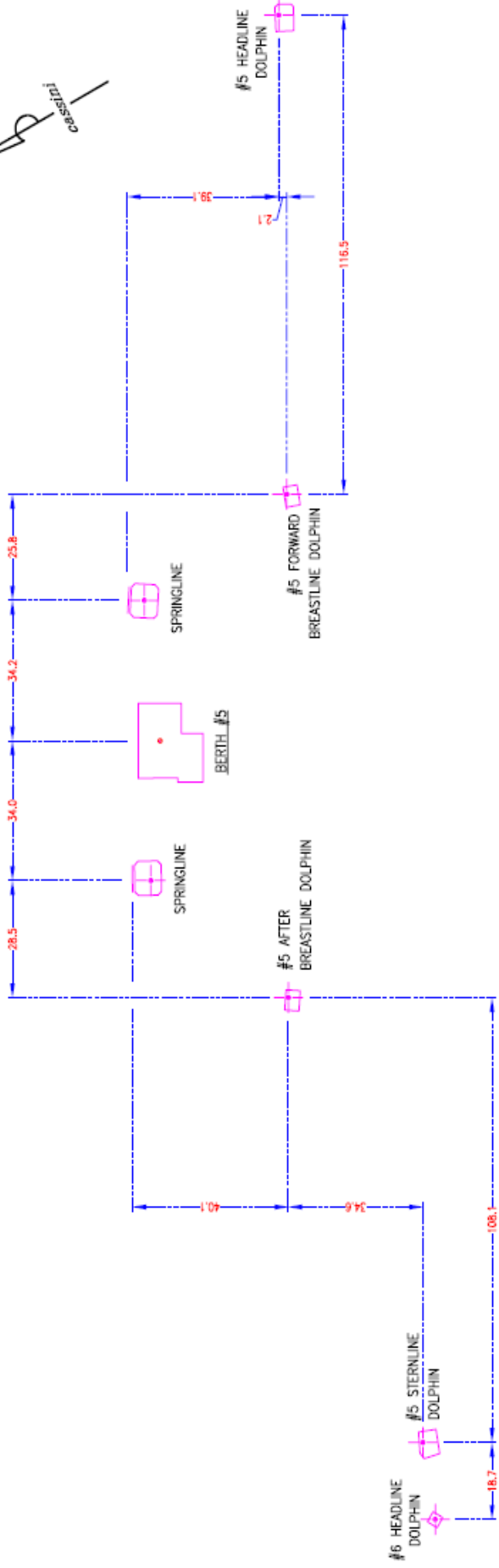
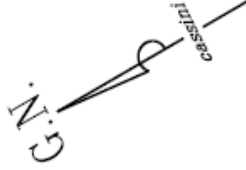


No. 2 Berths – North & South – P.a.P.

PETROTRIN SURVEY DEPARTMENT

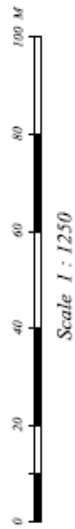
APPENDIX IV

NO. 5 BERTH — *Pointe-a-Pierre Port*



POINT	BERTH #5 ELEV. (M)
MAIN PLATFORM	4.0
TOP OF BOOM	21.6
TOP OF GANTRY	22.5

Note:
 1. All dimensions are in Metres.
 2. Elevations are based on Mean Sea Level, which was obtained by adding 0.585 m to Textin Datum

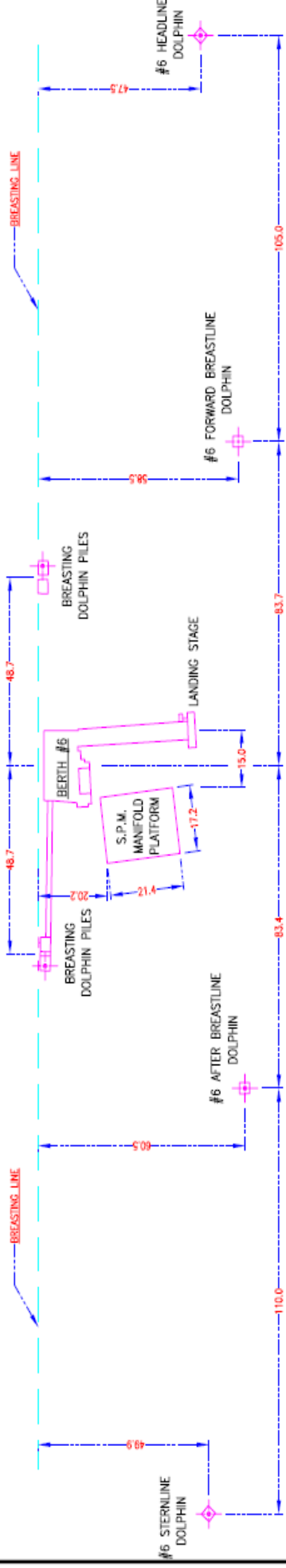
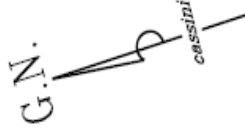


Scale 1 : 1250

No. 5 Berth - P.a.P			
Scale of drawing	1 : 1250	Drawn by:	R.M
Date of Survey	February 2002	Checked by:	J.S
Surveyed by:	J.S	PETROTRIN SURVEY DEPARTMENT	

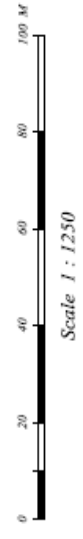
APPENDIX V

NO. 6 BERTH – Pointe-a-Pierre Port



Note:
 1. All dimensions are in Metres.
 2. Elevations are based on Mean Sea Level, which was obtained by adding 0.585 m to Textrin Datum

POINT	BERTH #6 ELEV. (M)
MAIN PLATFORM	3.6
TOP OF BOOM	22.9

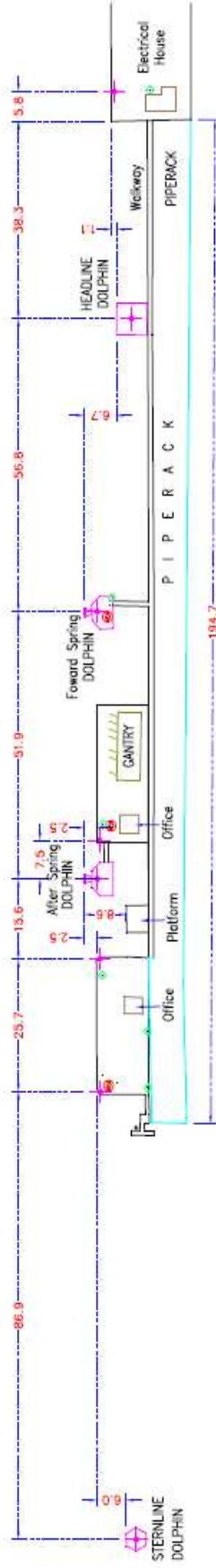


No. 6 Berth – P.a.P	
Scale of drawing	1 : 1250
Date of Survey	February 2002
Drawn by:	R. M.
Surveyed by:	J. S.
Checked by:	J. S.

PETROTRIN SURVEY DEPARTMENT

APPENDIX VI

BERTH 7 - Pointe-a-Pierre Port



LEGEND

	Utility Poles
	Bollard
	Hydrant
	Fender

POINT	BERTH # 7
MAIN PLATFORM	ELEV. (M) 3.49
TOP OF BOOM	14.69
TOP OF GANTRY	13.04



Scale 1:1000

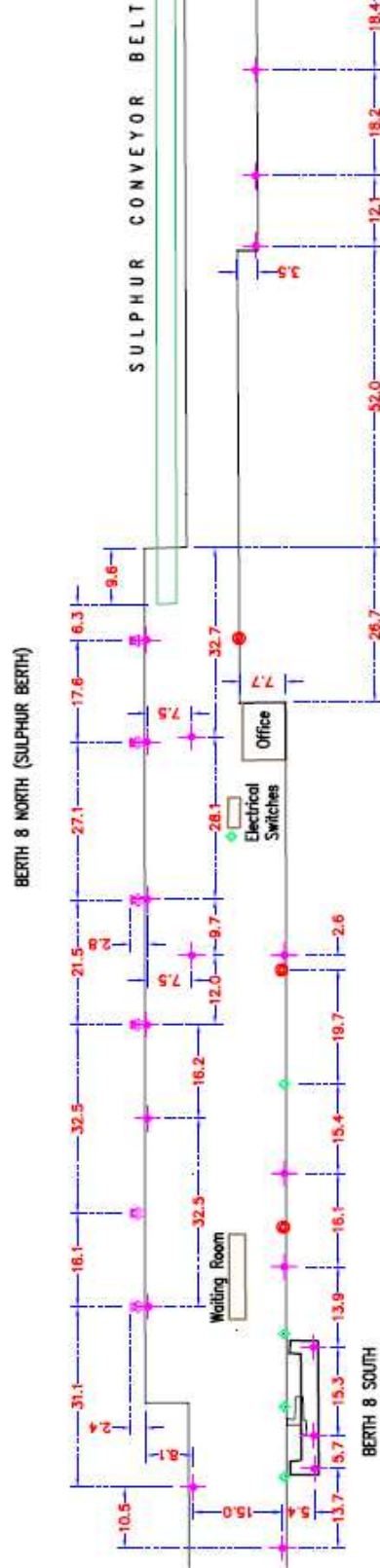
Note: 1. All dimensions are in Metres.
2. Elevations based on the Mean Sea Level, which was obtained by adding 0.585m to the Textrin Datum

No. 7 Berth -P.a.P.

Scale of drawing	1 : 1000
Date of Survey	May 2008
Drawn by:	D. Pélade
Surveyed by:	M.A. & M.D.R.
Checked by:	J.S.

PETROTRIN SURVEY DEPARTMENT

BERTH 8 NORTH (SULPHUR BERTH) - Pointe-a-Pierre Port



LEGEND

	Utility Poles
	Bollard
	Hydrant
	Fender



Scale 1:1000

Note: 1. All dimensions are in Metres.
 2. Elevations based on the Mean Sea Level, which was obtained by adding 0.565m to the Textrin Datum

POINT	SULPHUR BERTH ELEV. (M)
MAIN PLATFORM	3.74
TOP OF BOOM HOUSE	12.30
TOP OF GANTRY	15.61

Sulphur Berth P.a.P

Scale of drawing	1 : 1000
Date of Survey	May 2008
Drawn by	D. Zede
Surveyed by	M.A. & N.D.R.
Checked by	JS

PETROTRIN SURVEY DEPARTMENT

APPENDIX VIII

Port of Pointe a Pierre Authorities

The Petroleum Company of Trinidad and Tobago Limited, Pointe a Pierre, Trinidad, W.I. Tel: (868) 658-4200. Petrotrin Port & Marine: Fax: (868) 658-4636. Contact:

Manager, Port & Marine: Leonard Chan Chow (868) 658-3347 or 658-4200 Ext. 2424/2327; email: Leonard.ChanChow@petrotrin.com

Port Operations Superintendent: Colin Piper (868) 658-0327 or (868) 658-4200 Ext. 2426/7; email Colin.Piper@petrotrin.com

PFSO: Selwyn Johnetty (868) 658-7761 or 658-4200 EXT 2184 E-mail: selwyn.johnetty@petrotrin.com